

2024 annual report to the Community

Cooper Pedy Area School and Cooper Pedy Preschool

Cooper Pedy Area School number: 0920

Cooper Pedy Preschool number: 1566

Partnership: Far North



School principal:

Maurice Saah

A handwritten signature in black ink, appearing to read "Maurice Saah", written over a white rectangular background.

Date of endorsement:

7/05/2025

Context Statement

Coober Pedy Area School caters for students from R-12. At the time of this report, the enrolment in 2024 is 156. Coober Pedy Area School is classified as Category 1 on the Department for Education Index of Educational Disadvantage. At the time of this report, the school population includes 54% Aboriginal students, 15% students with disabilities, 8% students with English as an additional language or dialect (EALD) funded background, 4% children/young people in care. Further information about the school is available on the school's website (including its context statement), as well as the My School website.

Information about Coober Pedy Preschool is available on the centres website, as well as the Australian Children's Education and Care Quality Authority (ACECQA) website.

Data Source: Department for Education data holdings from Mid census captured in AUGUST 2024.

Governing Council Report

Thank you all for your support of the school and the Governing Council during the year.

The school Governing Council held an AGM last year after a two-year gap. The AGM was successful and all elected positions (10 parents and 2 community members) were filled.

The school elected a staff representative and the District Council of Coober Pedy nominated the CEO as their representative.

Umooona Community did not appoint anyone in 2024 but we are hopeful they will be represented in 2025.

The Governing Council has met 9 times in 2024. In addition to our various roles including the review, approval and monitoring of the school budget and finance reports, the Governing Council has reviewed and updated, where necessary, all the administrative documents of the council (the Constitution, the Standing Orders and the Terms of Reference of the subcommittees of the Council). We have also reinstated the Finance Advisory Committee (FAC). This committee, comprises of the school principal, the school finance officers and the Governing Council treasurer and chairperson. The FAC has been reviewing and reporting on the budget and finance reports to the governing council for during the year.

During the year, the Governing Council constituted two sub-committees, one for the OSHC and the other for the Canteen.

After the retirement of the OSHC director at the end of 2023, the service has not been in operation in 2024. The OSHC had been running at a loss for a few years prior and a review of its viability was necessary and part of the OSHC sub-committee's mandate. The OSHC sub-committee has been working with the Education Department to find a solution for the families in need of after school hours care. There is still no clear resolution at this stage. The Canteen has not been operational since 2020. Like OSHC, the service hasn't been viable prior its closure and we had to look at different ways of running the canteen. The Council has been committed to see its reopening in 2025 and we are on track to see the canteen re-open at the start of Term 2 2025.

On behalf of Governing Council, I would like to acknowledge the engagement and commitment of Mr Maurice Saah, our school principal, to the school community and more specifically the school and students. We were pleased to see the introduction of a language program in 2024 and for the Artist of Residence for working on different aspects of the Arts curriculum with the students.

We would like to thank the 2024 school staff for their commitment to our students and the school.

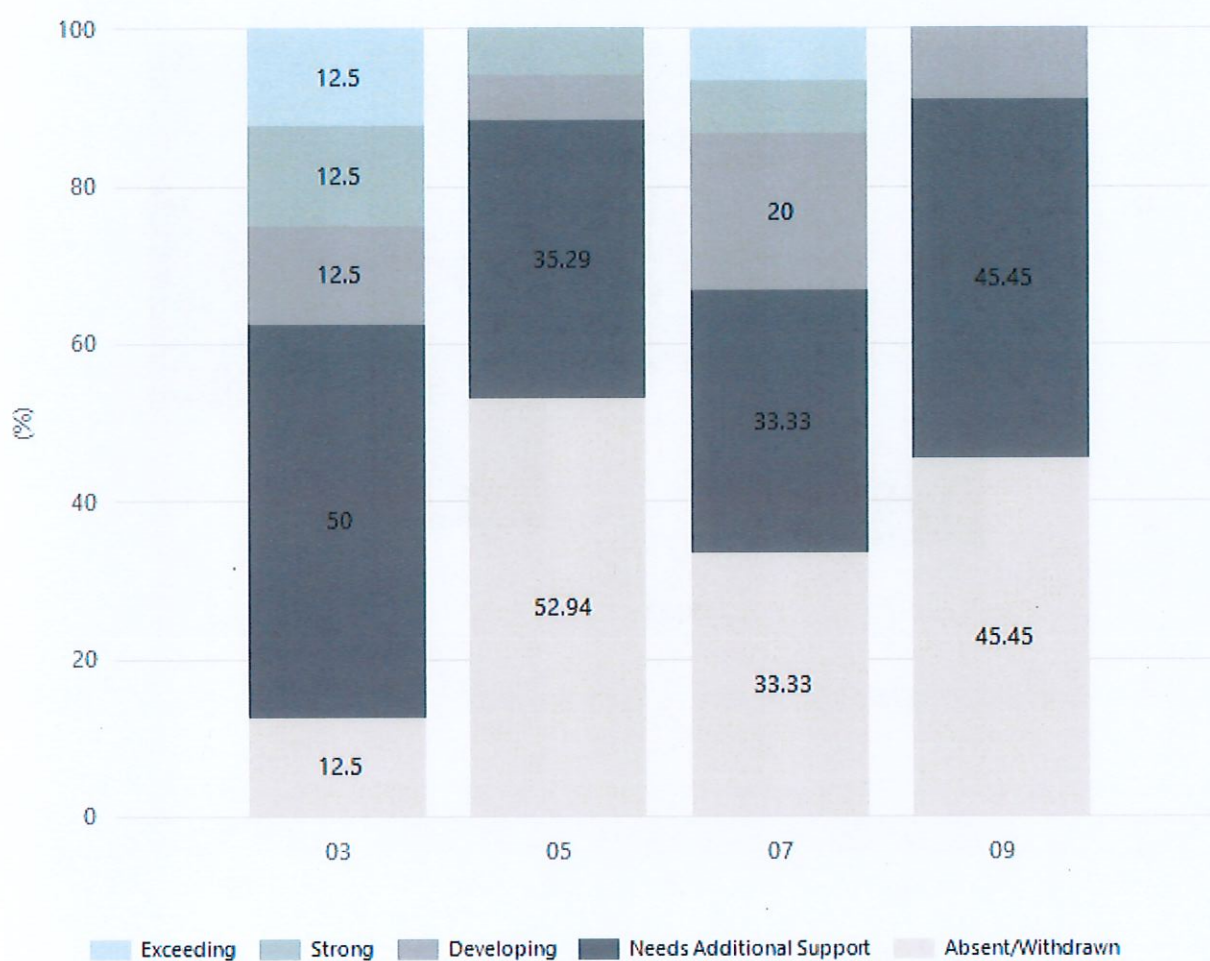
We welcome all our new staff and are looking forward to working together for the great educational outcomes for all of our students and school community.

Thank you

Ariane Montminy-Roberge

Governing Council Chairperson

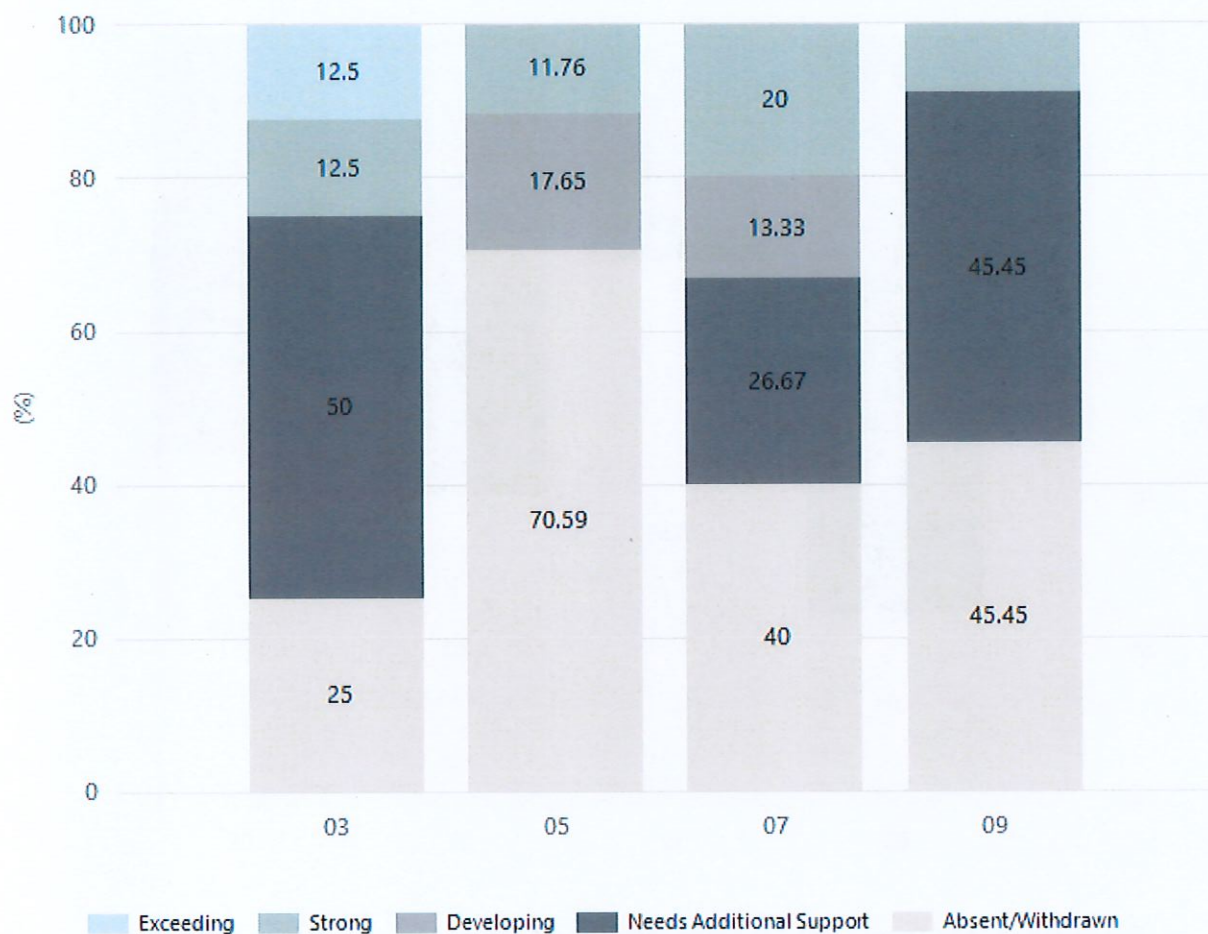
Reading



Year Level	03	05	07	09
Exceeding	1		1	
Strong	1	1	1	
Developing	1	1	3	1
Needs Additional Support	4	6	5	5
Absent/Withdrawn	1	9	5	5
Total	8	17	15	11

Data Source: Department for Education Assessment Data Holdings, 2024. If there are less than 6 students who sat NAPLAN in a school, no information will be shown. If a year level has less than 6 students, that year level will not be shown in NAPLAN results.

Grammar

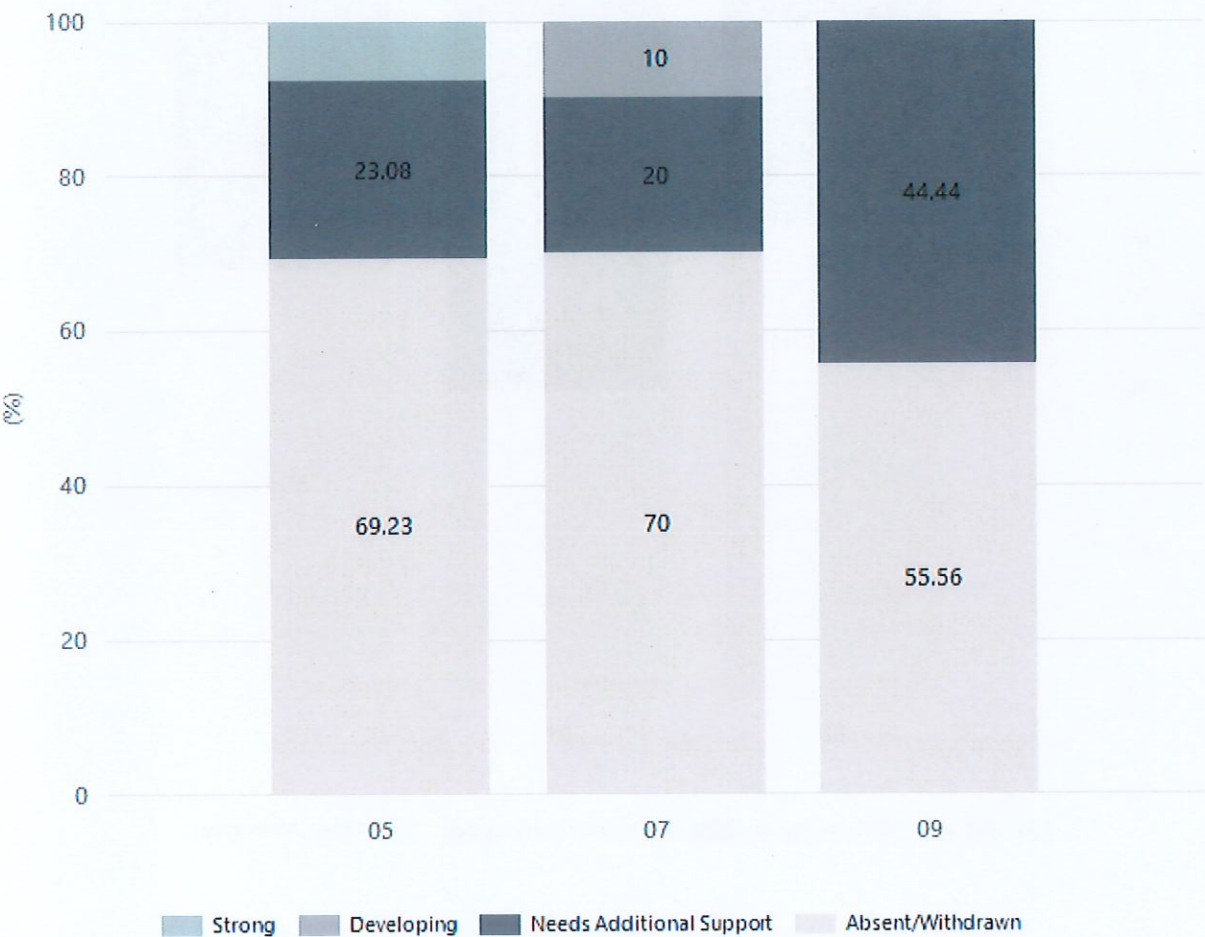


Year Level	03	05	07	09
Exceeding	1			
Strong	1	2	3	1
Developing		3	2	
Needs Additional Support	4		4	5
Absent/Withdrawn	2	12	6	5
Total	8	17	15	11

Data Source: Department for Education Assessment Data Holdings, 2024. If there are less than 6 students who sat NAPLAN in a school, no information will be shown. If a year level has less than 6 students, that year level will not be shown in NAPLAN results.

NAPLAN Proficiency - Aboriginal Learners

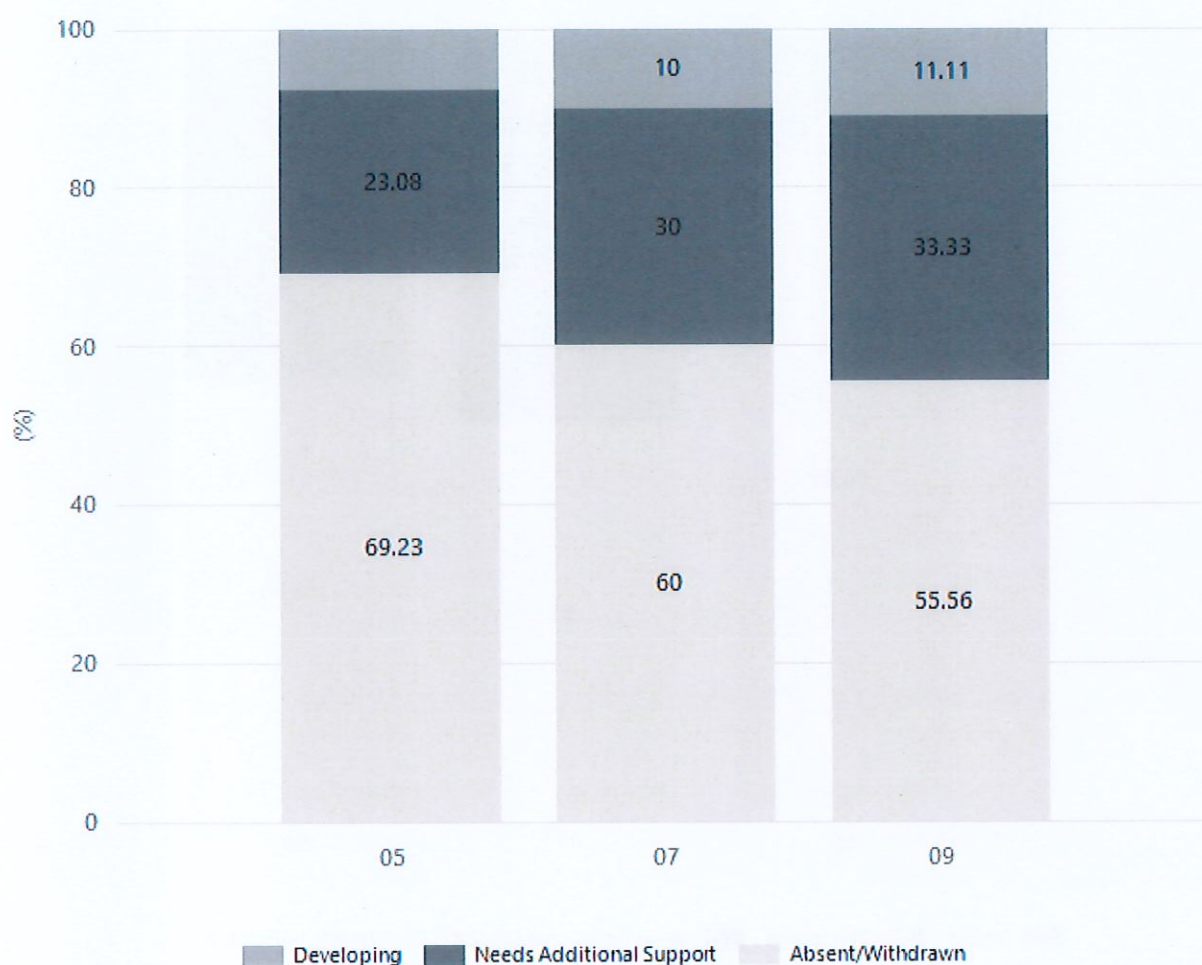
Numeracy



Year Level	05	07	09
Strong	1		
Developing		1	
Needs Additional Support	3	2	4
Absent/Withdrawn	9	7	5
Total	13	10	9

Data Source: Department for Education Assessment Data Holdings, 2024. If there are less than 6 students who sat NAPLAN in a school, no information will be shown. If a year level has less than 6 students, that year level will not be shown in NAPLAN results. Only data for Aboriginal learners is displayed.

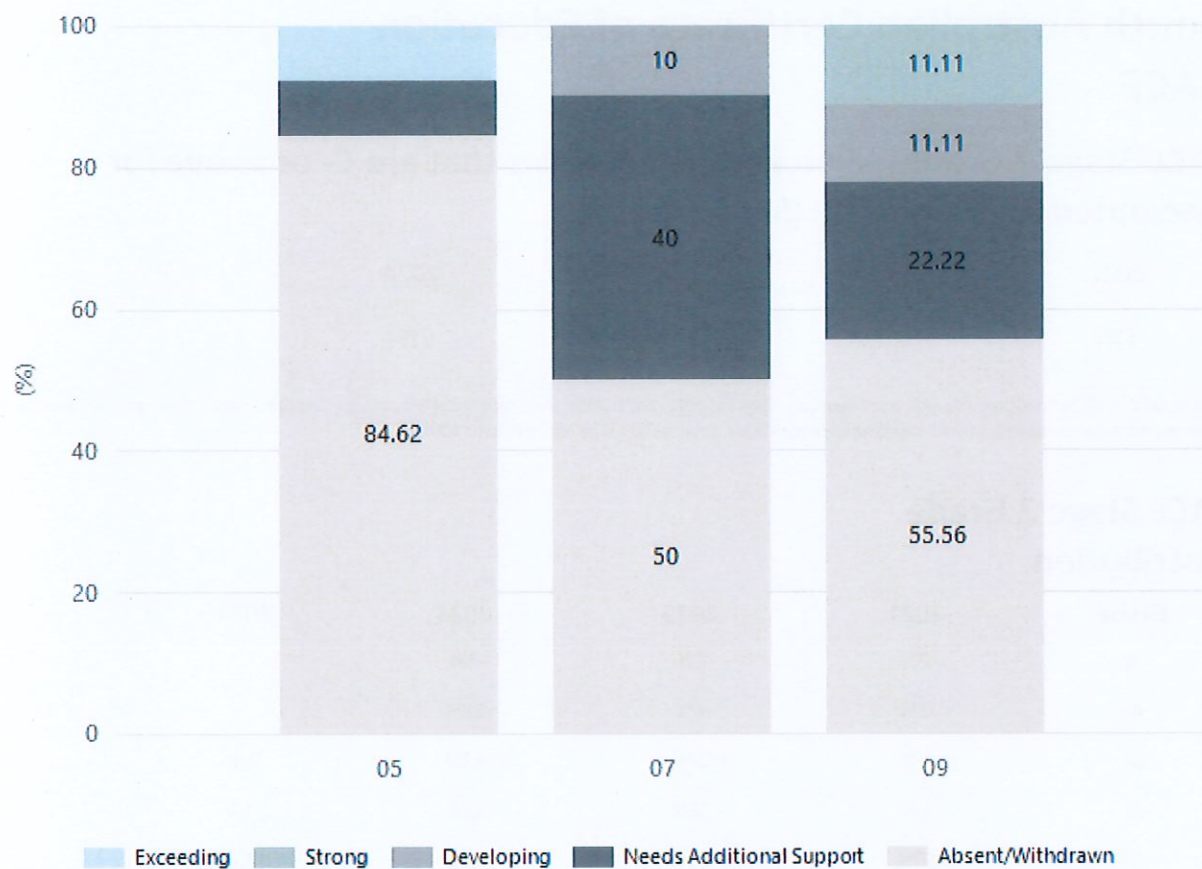
Writing



Year Level	05	07	09
Developing	1	1	1
Needs Additional Support	3	3	3
Absent/Withdrawn	9	6	5
Total	13	10	9

Data Source: Department for Education Assessment Data Holdings, 2024. If there are less than 6 students who sat NAPLAN in a school, no information will be shown. If a year level has less than 6 students, that year level will not be shown in NAPLAN results. Only data for Aboriginal learners is displayed.

Spelling



Year Level	05	07	09
Exceeding	1		
Strong			1
Developing		1	1
Needs Additional Support	1	4	2
Absent/Withdrawn	11	5	5
Total	13	10	9

Data Source: Department for Education Assessment Data Holdings, 2024. If there are less than 6 students who sat NAPLAN in a school, no information will be shown. If a year level has less than 6 students, that year level will not be shown in NAPLAN results. Only data for Aboriginal learners is displayed.

SACE Completion - Percentage of completers out of those students who had the potential to complete their SACE in October that year

2021	2022	2023	2024
91%	73%	100%	100%

Data Source: SACE School Data Reports, as of February 2024 for 2021-2023. 2024 SACE results are School supplied data. When there are less than six students, no data is supplied. Due to rounding of percentages, total results may not add up to 100%.

Year 12 Students undertaking Vocational or Trade Training (VET)

	2022	2023	2024
Percentage of Year 12 students undertaking Vocational Training or Trade Training			
Percentage of Year 12 students attaining a Year 12 certificate or equivalent VET qualification			

Data Source: School supplied data

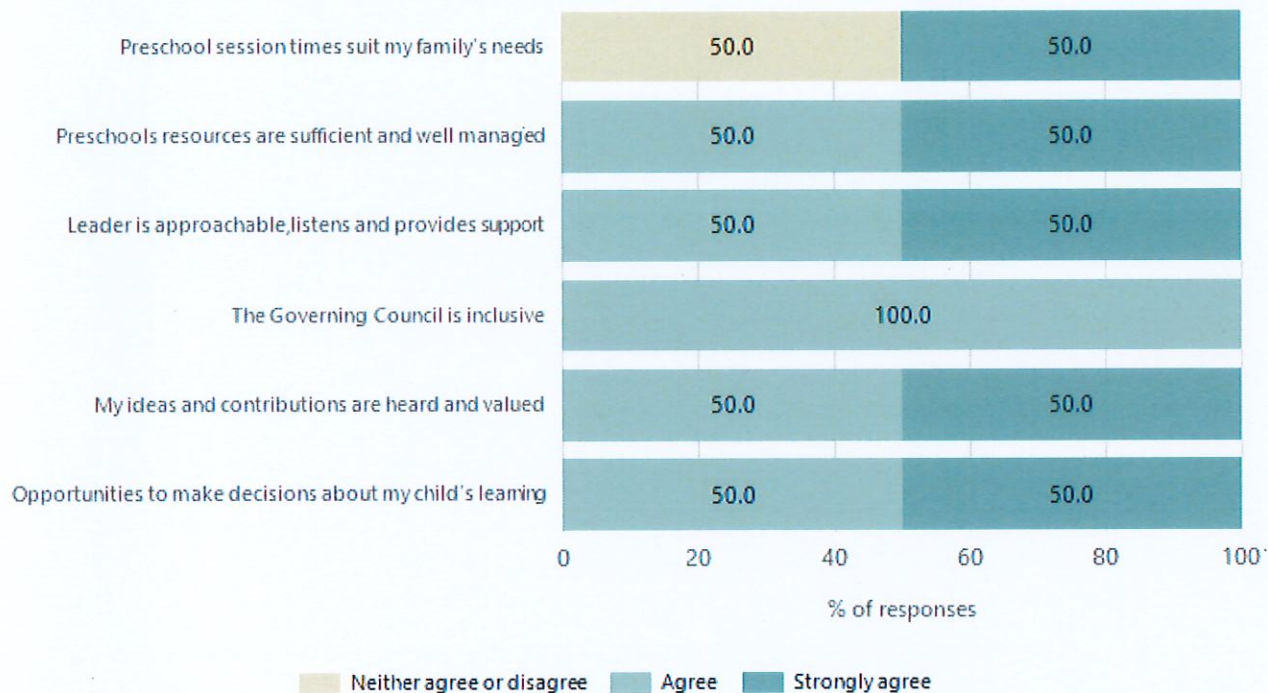
Preschool Attendance

	Term 1	Term 2	Term 3	Term 4
2021 centre	62.3%	49.1%	52.6%	60%
2022 centre	63.6%	63.5%	76.8%	44.3%
2023 centre	44.3%	48.2%	49.9%	60.5%
2024 centre	64.8%		65.6%	61.2%

Based on attendances recorded in the two-week reference period each term. Data for eligible enrolments as described in the department's Enrolment policy. Attendance rates may differ to previous reporting with the transfer from calculations based on deemed attendance to actual attendance using booked hours divided by attended hours. Data Source: Department for Education Attendance Data, Semester 1 Report 2024. A blank cell indicates there were no students enrolled.

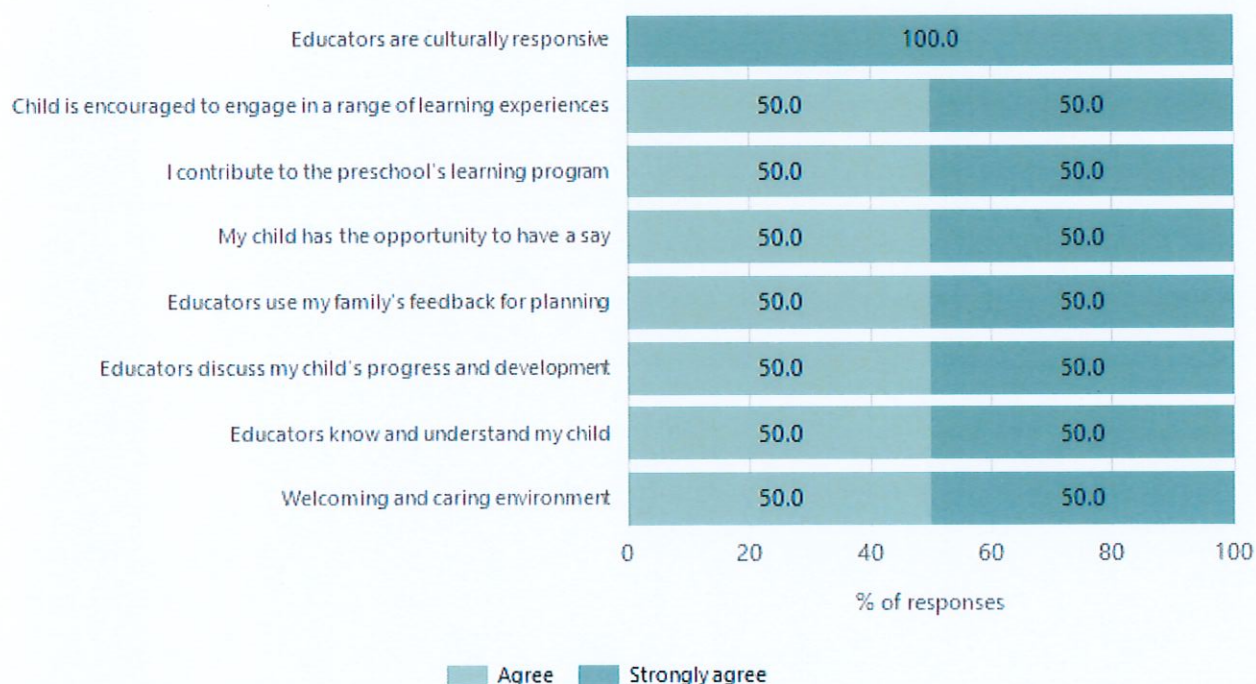
Preschool Family Opinion Survey

Governance, Leadership and Management

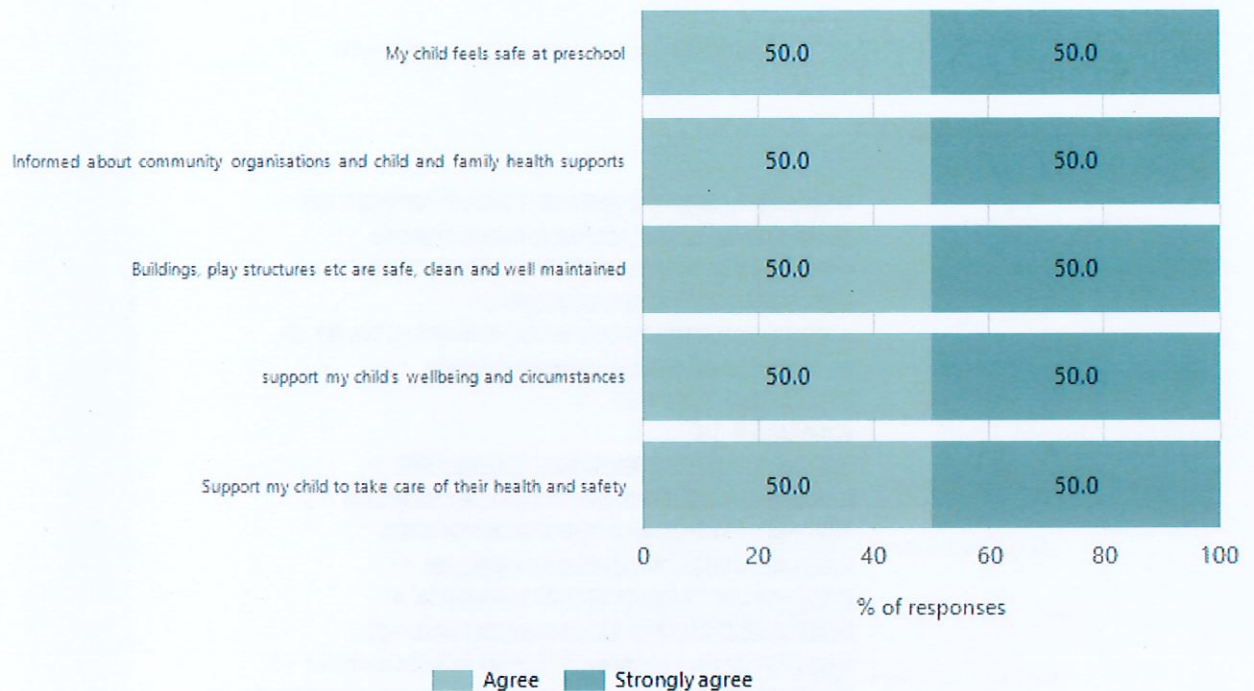


Data Source: 2024 Department for Education Preschool Family Opinions Survey, Term 3 2024.

Quality of Teaching and Learning

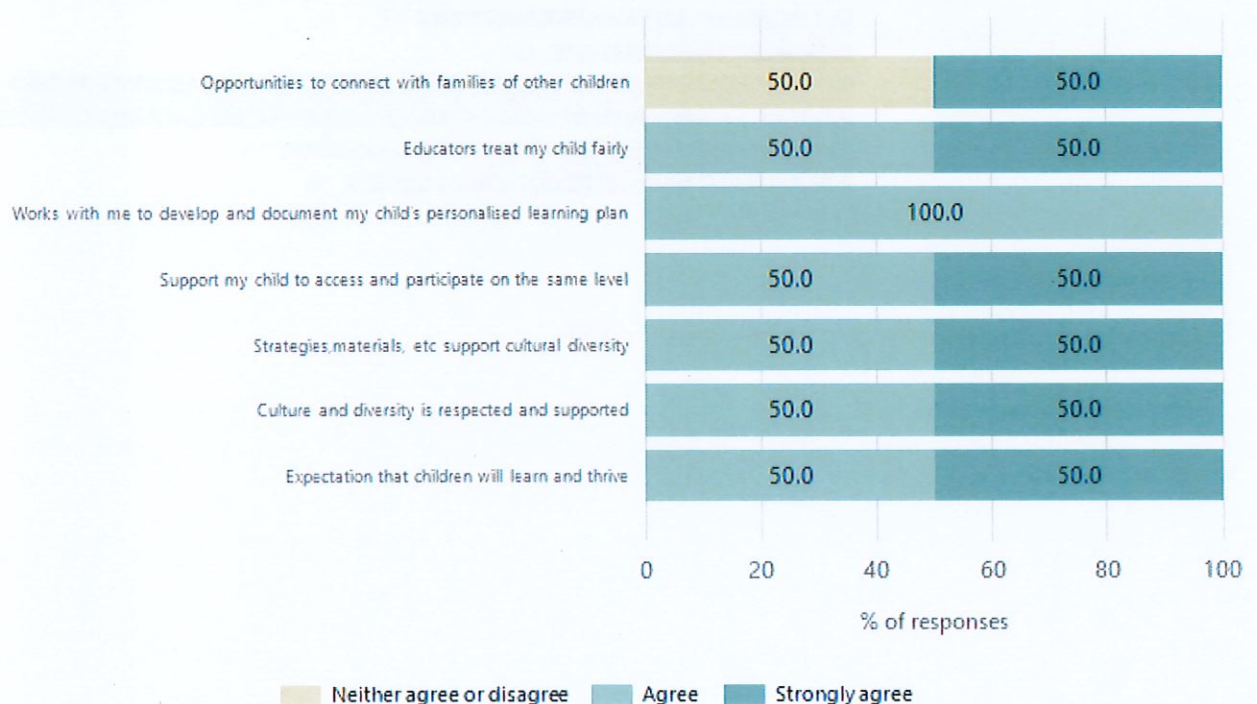


Safety, Health and Wellbeing



Data Source: 2024 Department for Education Preschool Family Opinions Survey, Term 3 2024.

Support and Inclusion



Data Source: 2024 Department for Education Preschool Family Opinions Survey, Term 3 2024.

Destination Schools

Feeder Schools (Site number - Name)	2022	2023	2024
0920 - Coober Pedy Area School	100.0%	100.0%	73.9%
1063 - Highgate School			4.4%
9999 - Unknown			21.7%

Note: The data is collected in term 3. It does not reflect actual schools enrolled in by existing preschool children. A blank cell indicates there was no data for students enrolled.

Data Source: Department for Education Destination Data Report, 2024.

Intended Destination

Leave Reason	Number	%
NG - ATTENDING NON-GOV SCHOOL IN SA	2	4.0%
NT - LEFT SA FOR NT	3	7.0%
QL - LEFT SA FOR QLD	6	13.0%
SM - SEEKING EMPLOYMENT IN SA	2	4.0%
TG - TRANSFERRED TO SA GOVERNMENT SCHOOL	27	60.0%
WA - LEFT SA FOR WA	2	4.0%

Data Source: Department for Education Destination Data Report, 2024. Data extract term 3 2024. Data shows recorded destinations for students that left the school in the previous year. Data is uploaded by schools in term 3 and may not reflect final or total figures at time of report creation.